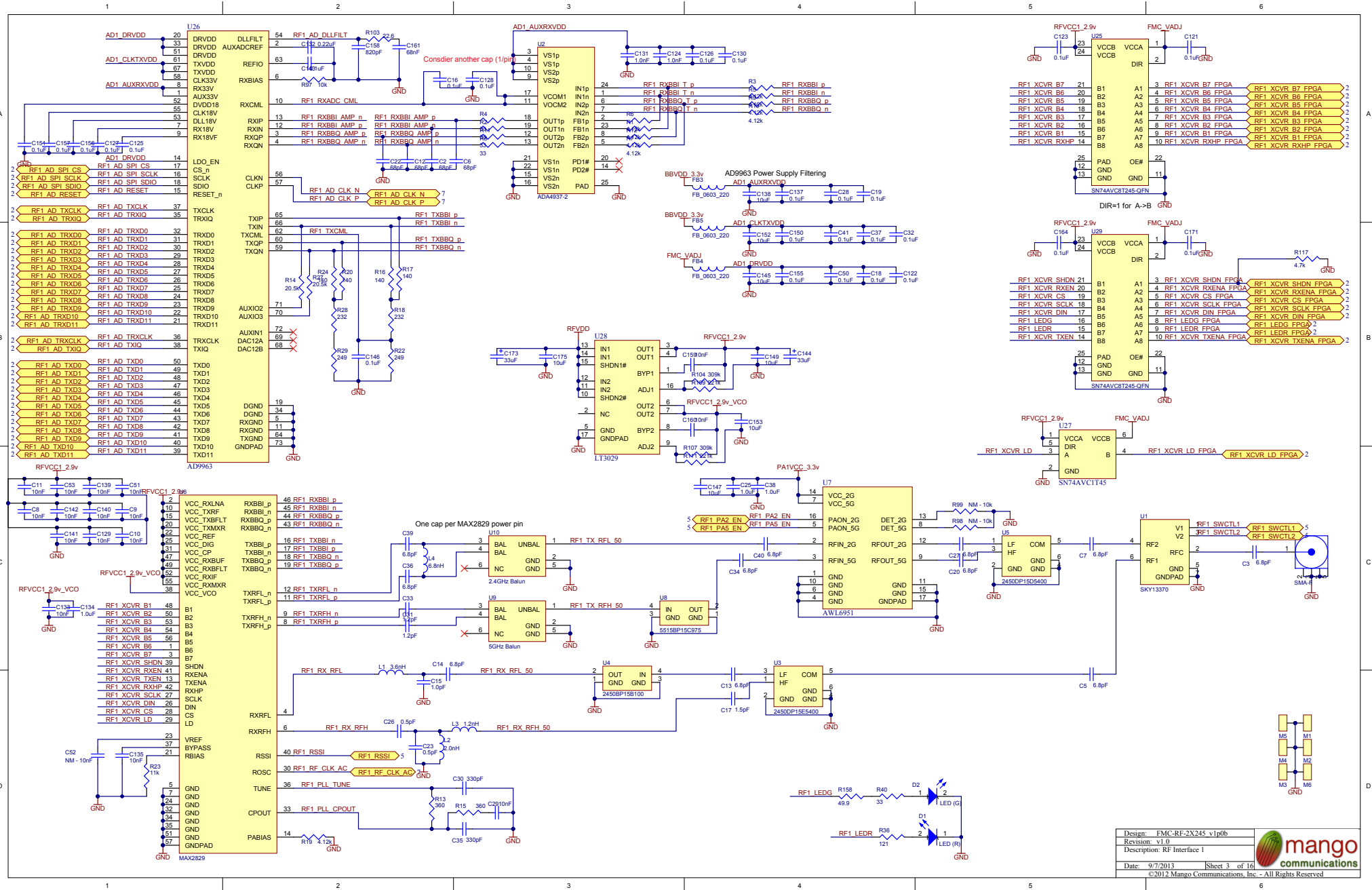


Mango Communications FMC-RF-2X245  
Dual-Radio (MAX2829) FMC Module  
Rev 1.0

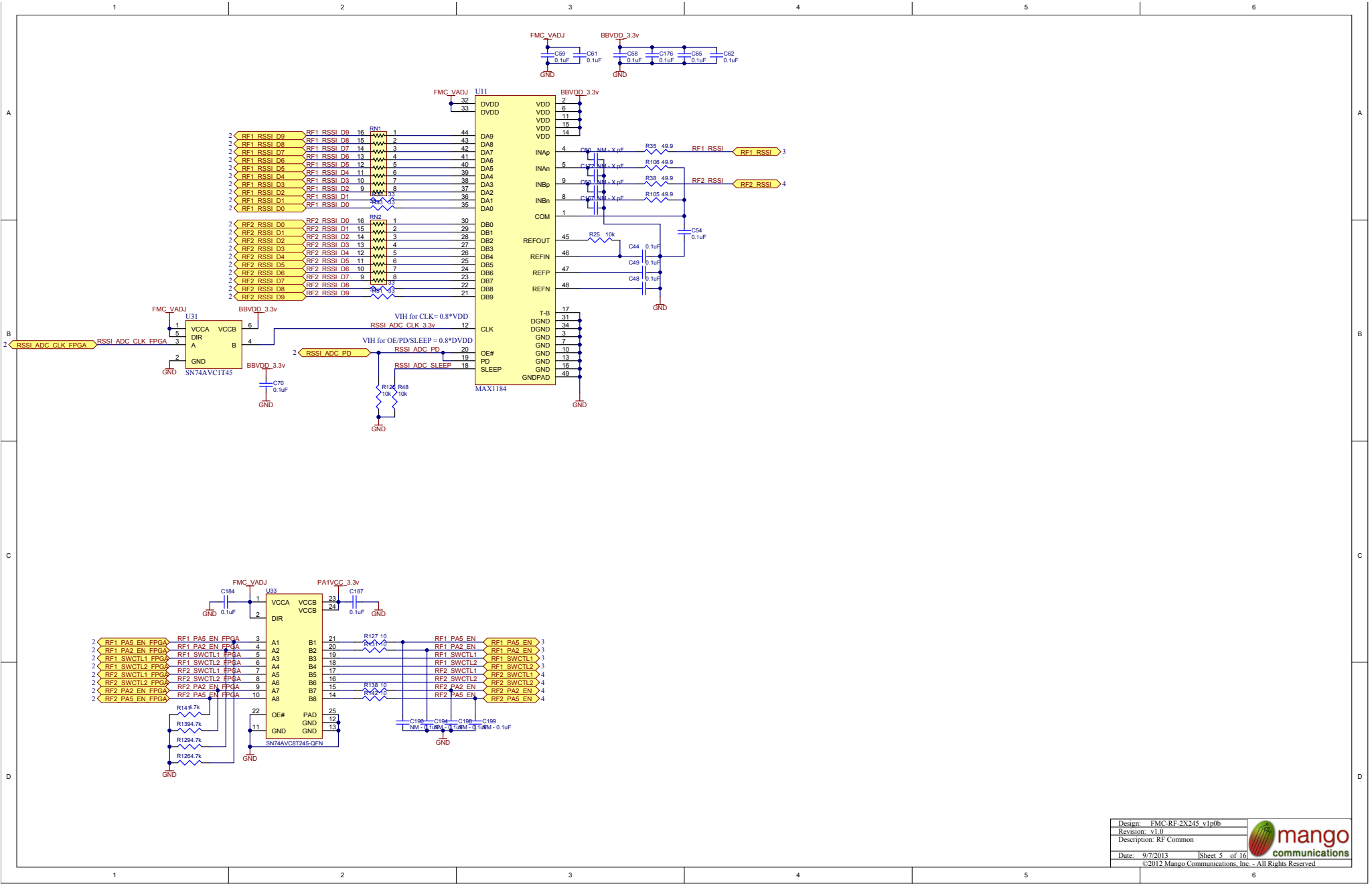
- 1 - Table of Contents
- 2 - FMC HPC Connector
- 3 - RF Chain 1
- 4 - RF Chain 2
- 5 - RF Common Circuits
- 6 - Power
- 7 - Clocks
- 8 - MGTs and Misc I/O

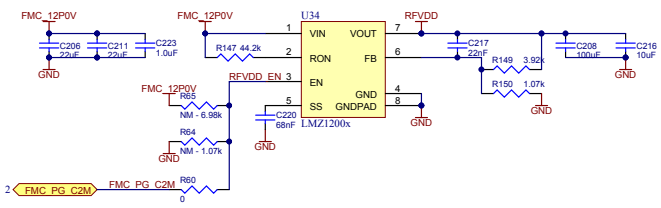
Copyright (c) 2013 Mango Communications



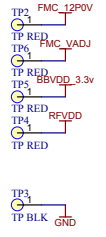
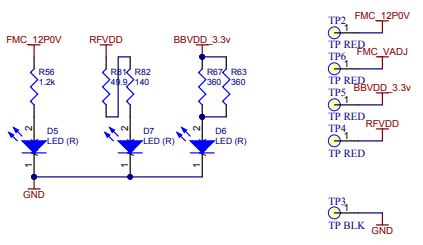
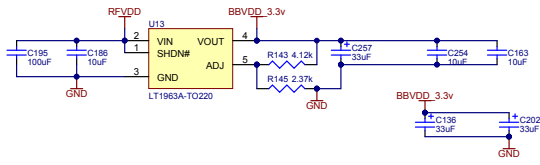
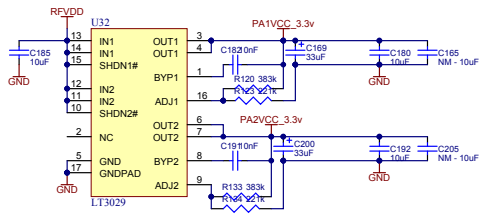


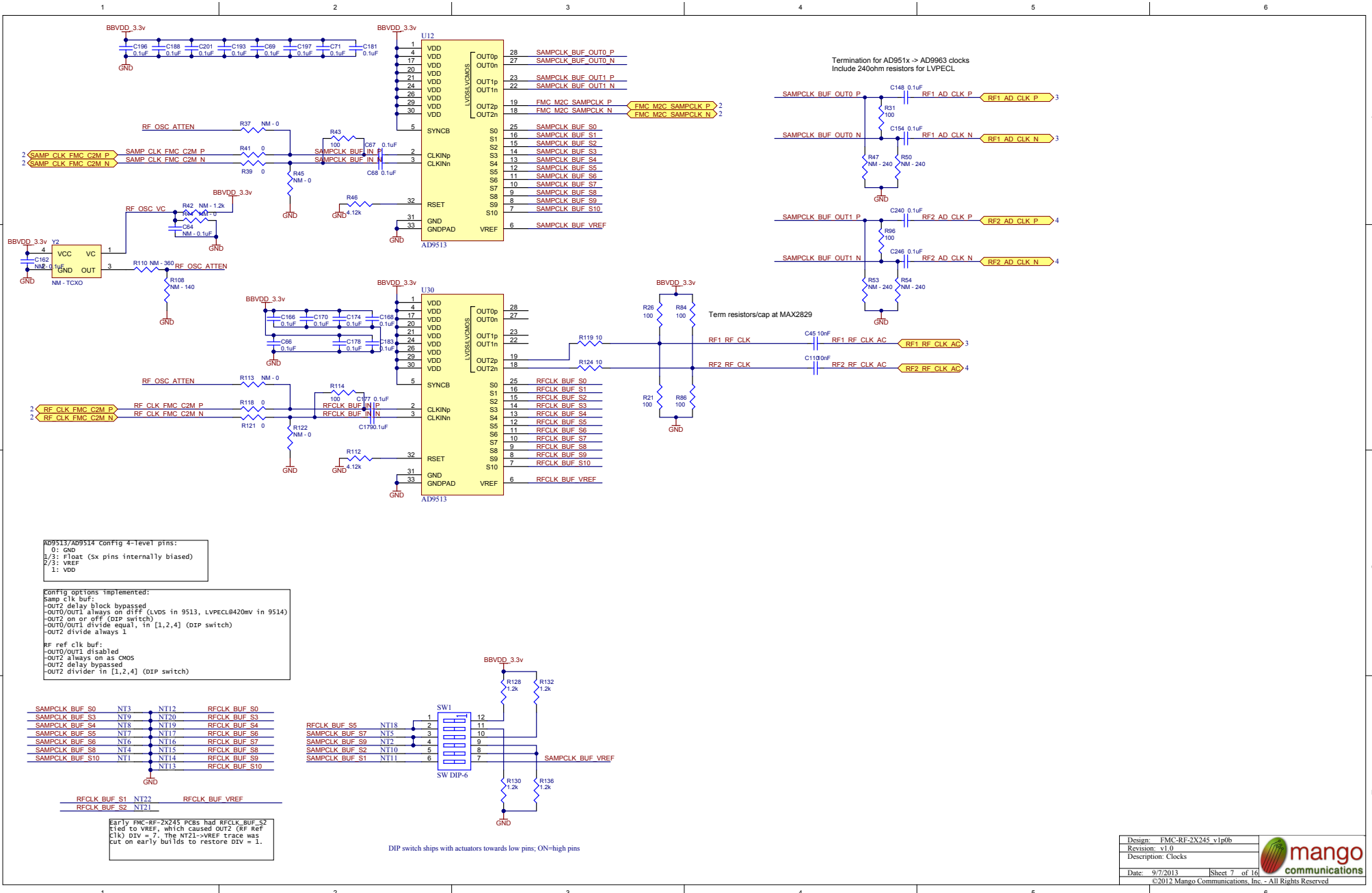


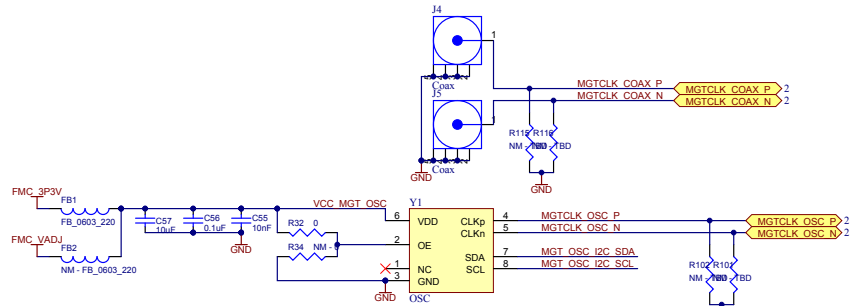




Build-time option of FMC PG or under-voltage ctrl



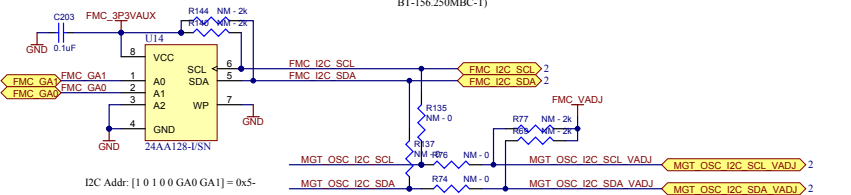




I2C Addr: [1 0 1 0 1 0 1] = 0x55

Supports programmable oscillator:  
Silicon Labs 570BAB000383DG

Rev 1.0 boards built with non-programmable  
156.25MHz LVDS osc (TXC  
BT-156.250MBC-T)



I2C Addr: [1 0 1 0 0 GA0 GA1] = 0x5-

Build time option of independent EEPROM/OSC I2C busses (for when S1570 VDD isn't 3.3v)

